

CHARMILL

RESIDENTIAL



Fernhead Road, Maida Vale W9

A recently refurbished two bedroom ground floor garden apartment. The property comprises a spacious open plan kitchen/reception room leading to a private garden, two double bedrooms and a family bathroom. The apartment benefits from having its own entrance and wooden flooring throughout.

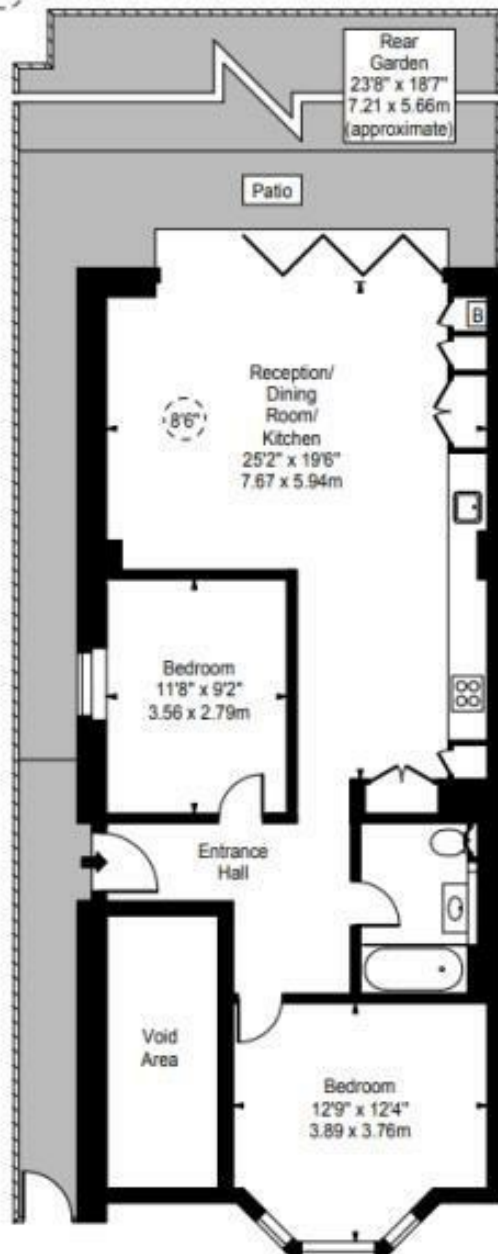
- Two bedrooms
- One bathroom
- Private garden
- Ground floor
- Own entrance
- Open plan kitchen/reception

£670

Fernhead Road,
Maida Vale, W9 3EL



○ - Ceiling Height



Ground Floor

Approx Gross Internal Area **822 Sq Ft - 76.36 Sq M**

For illustration Purposes Only - Not To Scale

www.goldlens.co.uk

Ref. No. 010280M

Energy Efficiency Rating		Current	Potential
Very energy efficient - lower running costs			
(92 plus) A			
(81-91) B			
(69-80) C			
(55-68) D			
(39-54) E			
(21-38) F			
(1-20) G			
Not energy efficient - higher running costs			
England & Wales	EU Directive 2002/91/EC	71	

Environmental Impact (CO ₂) Rating		Current	Potential
Very environmentally friendly - lower CO ₂ emissions			
(92 plus) A			
(81-91) B			
(69-80) C			
(55-68) D			
(39-54) E			
(21-38) F			
(1-20) G			
Not environmentally friendly - higher CO ₂ emissions			
England & Wales	EU Directive 2002/91/EC		

